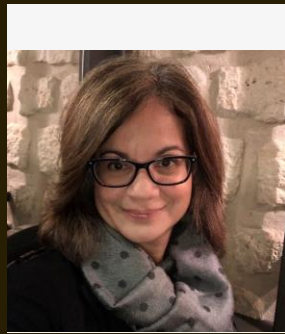


AERA SIGRME NEWSLETTER SUMMER 2019

<http://sigrme.org/>

[SIG-RME Facebook Group](#)



Sandra Crespo



Jeff Choppin



Luis Leyva

INSIDE THIS ISSUE

PG. 1

New Twitter Account

AERA Conference Call for Proposals

PG. 2

NCTM Research Conference Call for Proposals, Reviewers, and Celebration

Call for Early Career Publication Award Nominations

PG. 3

Website

Membership Dues/Contact Information

PG. 4-8

2019 Business Meeting Minutes

Treasurer's Report

PG. 8-9

SIGRME Connector: Creating Opportunities to Connect

PG. 10

2019 Photos



Nicole M. Joseph



Dasha Gerasimova



Darrell Earnest



Naomi Jessup



Lorraine Males



Lori Burch

NEW TWITTER ACCOUNT

Hello math education scholars/educators! We have a Twitter account! Please follow us at [@AERA_SIGRME](#). We will feature exciting things from our Newsletter and other happenings in math education. [@profnicolej](#) is our new Communications person, so get READY! [#myfirstTweet](#)

We received 200 new followers the first day we announced our account! Please consider joining Twitter to keep up with our news.

2020 AERA CONFERENCE CALL FOR PROPOSALS



Please see the Call for Proposals for details regarding proposal requirements at the link below!

https://www.aera.net/Portals/38/2020%20AM%20Call%20for%20Submissions_1.pdf Please also consider signing up to serve as a chair or discussant.

"We will always have STEM with us. Some things will drop out of the public eye and will go away, but there will always be science, engineering, and technology. And there will always, always be mathematics."



Katherine Johnson
Mathematician



NCTM RESEARCH CONFERENCE, REVIEWERS, & CELEBRATION

NCTM 2020 Research Conference
St. Louis
October 19-21

The Research Committee is working on a re-energized 2020 NCTM Research Conference. The Research Conference is moving to the fall with the Annual Meeting. Calls for the 2020 Research Conference will be available this fall. Also, please consider volunteering to review NCTM research proposals.

2020 Math Education Research Celebration: Recognition, Inspiration, and Collaboration
Chicago
April 1, 2020

2020 marks a range of milestones for the mathematics education research community, including 50 years by the *Journal for Research in Mathematics Education* and 70 years for the National Science Foundation. This one-day event will include —

- TED-like talks to recognize and inspire the community, engage in and support collaboration, and cultivate opportunities for greater impact;
- Roundtable paper sessions to share your ideas, learn from others, and create something new, and;
- Celebration! The mathematics education research community is a significant part of NCTM and of our celebration of 100 Years. **Calls for themes, TED-like talks, papers, and celebration ideas will begin in July.**

Check it out here! <https://www.nctm.org/researchconf/>



CALL FOR EARLY CAREER PUBLICATION AWARD NOMINATIONS

In 2001, we established the "SIG-RME Early Career Publication Award." The purpose of the Early Career Publication Award is to recognize an outstanding mathematics education research publication by an early-career scholar. The award includes a stipend of \$500, announcement in the SIG-RME newsletter, the SIG-RME website and recognition at the annual NCTM Research Conference. The first award was presented in 2002, and the most recent awards were presented to Dr. Annie Garrison Wilhelm.

Nomination Guidelines

The publication being nominated for the SIG-RME Early Career Publication Award may be based on the dissertation work of the nominee or other recent research the nominee has conducted. The nominee should be either the single author or the first author (in the case of a jointly authored paper) and the contributor of the majority of the work done on the paper. Only peer reviewed research publications are eligible for nomination; the award will not be given for a dissertation. The nominee should be considered pre-tenure at their institution or have received their doctoral degree in mathematics education no earlier than

6 years prior to the nomination deadline (i.e., no earlier than November 1, 2013 for this year's nomination). Current SIG-RME board members are not eligible. The publication being nominated will be judged according to the following criteria: significance of research; relevance and timeliness of research question; and quality and rigor of research.

Nomination Packets

- Nominations should include (and are restricted to) the following:
 - A letter nominating the author of an early career publication. Please include the name of the author, the date he/she received the doctoral degree, and the name of the institution that conferred the degree. The nominator should also include reasons that the paper should be considered as an example of an outstanding mathematics education research publication. If the article is based on the author's dissertation, please include the name of the dissertation director and complete bibliographic information about the dissertation or a link to the dissertation.
 - Self-nominations are allowed.
 - A copy of the published paper, including complete bibliographic information;

Nominations will be considered by a sub-committee of the Executive board, consisting of the Awards, Events, and Electronic Board Members. The decisions of that committee will be final. **Please send nomination materials electronically no later than Friday, November 1, 2019 to Darrell Earnest at dearnest@educ.umass.edu.** Please note that this deadline has been made earlier to allow the winner to be notified well before the AERA Annual Meeting.



SIGRME WEBSITE & MEMBERSHIP

Please check our website at <http://www.sigrme.org> and our [Facebook page](#) for information related to SIG-RME announcements, positions available, upcoming conferences, and much more. If you have any information you think should be posted on the SIG-RME website, please contact Naomi Jessup at njessup@gsu.edu.

The SIG-RME Annual Membership Directory is available on the AERA website (www.aera.net). Once you login to your AERA account, you can find the directory under "Member Resources."

Membership Dues and Contact Information

The number of AERA sessions allotted to our SIG each year is based, in part, on the number of SIG-RME members. **Please remember to renew your SIG-RME membership when you renew your AERA membership.** If your mailing address or other contact information is incorrect, please update your contact information through the AERA website.



2019 BUSINESS MEETING MINUTES

We had roughly 100 people in attendance at the SIG Business Meeting at AERA in Toronto. At this meeting we honored this year's awardees for the distinguished scholar and early career publication awards and recognized outstanding reviewers. We opened with a reception followed by a presentation by Judit Moschkovich who delivered an outstanding Distinguished Scholar Plenary. Here are more details of these and other components of the meeting.

I. SIG Board Initiatives and Decisions 2018-19

- *Inaugural Outstanding Reviewer Award*. The board created a SIG-RME Outstanding Reviewer Award which was inaugurated at this meeting. This is an award that will be given each year to outstanding reviewers. The Program Chair of the SIG will select top reviewers to recognize at the business meeting.
- *Moved the Early Career Publication Award timeline up*. This change was created in order to render a decision early enough to allow awardees to make their travel plans and be able to attend the AERA annual meeting and be present for the conferring of the award at the SIG business meeting.
- *No longer sponsoring NCTM Research Conference Sessions*. Because the SIGRME does not have a central role in organizing the research conference, the board decided to stop co-sponsoring sessions for that conference. The NCTM leadership agreed with this decision and that both organizations will continue to collaborate in other ways.
- *Bylaws update*. The board has made some progress, but the work continues to revise the bylaws of the SIG so that it is consistent with current practices of the SIG. This work will continue by the newly elected board members.
- *Early career initiatives*. The SIG will continue to focus their efforts on early career mentoring and support activities. This was a welcomed and successful initiative that started last year and will continue. Details next.

II. Graduate and Early Career Initiatives

- *Mentor activities during AERA conference*. Last year the SIG piloted AERA Mentor events that supported 40 graduate students and early career researchers and that are continuing thanks to the success of those events. Thank you to our Experienced Researcher Mentors: Dr. Stephen Tucker, Dr. Kathryn Chval, Dr. Sarah Lubienski, Dr. David Stinson, Dr. Pat Herbst, Dr. Judit Moschkovich, Dr. Patricia Moyer-Packenham, Dr. Charles Hohensee.
- *SIG-RME Connector*. A read-only Google Sheet for SIG-RME members interested in connecting with other researchers for research collaborations, writing groups, etc. Although targeted for graduate students and early career researchers, any SIG-RME member can join. <https://goo.gl/forms/mecDVn3SiNResbzk2>

- **Website Resources** (<http://sigrme.org/aera-links/>) Updating resources for job search, presentation, grant writing, etc. Email your favorite resources and advice to sigmegraduaterep@gmail.com. Current Call: Presenting/Preparing for Conferences & Job Searches

III. Recognition of Outstanding Reviewers

The inaugural SIG-RME reviewer awards went to 4 faculty and 2 doctoral students who performed outstanding reviews of the SIG Program Conference Proposals.

- Dr. Mary Betsy Brenner, UC Santa Barbara
- Dr. Tracy Dobie, University of Utah
- Dr. Thierry Elin Saintine, Stockton University
- Dr. Erica Lietke, University of Delaware
- Qian Li, Purdue University
- Lynda Wynn, San Diego State University

More broadly the SIG-RME recognizes the following mathematics education scholars who were chosen as outstanding reviewers by prominent journals in our field. SIG-RME congratulates these stellar reviewers, with gratitude for their strong commitment to fostering high-quality scholarship in our field!

- *Mathematics Teacher Educator (MTE)*

- Amy Roth-McDuffy, Washington State University
- Shari Stockero, Michigan Technological University

- *Journal for Research in Mathematics Education (JRME)*

- Jessica Bishop, Texas State University
- AnnaMarie Conner, University of Georgia
- Paul Dawkins, Northern Illinois University
- Timothy Fukawa-Connelly, Temple University
- Jack Smith, Michigan State University
- Rose Zbiek, Pennsylvania State University

- *Journal of Mathematical Behavior (JMB)*

- Dor Abrahamson, University of California at Berkeley
- Mary Avalone, University of Miami
- Nicolas Boileau, University of Michigan
- Jennifer Czocher, Texas State University
- Fulvia Furinghetti, University of Genova, Italy
- Igor' Kontorovich, The University of Auckland, New Zealand
- Julie Nurnberger-Haag, Kent State University
- Keith Weber, Rutgers University
- Dov Zazkis, Arizona State University

IV. Awards' Chair Report

- *Outstanding Service Commendation*

Kristy Litster was surprised with the SIG's outstanding service commendation. She is the outgoing SIG's graduate student representative and has done an amazing job helping the board figure out better ways of sharing resources and supporting early career scholars.

- *Early Career Publication Award*

Dr. Annie Garrison Wilhelm from Southern Methodist University received this award for her publication, "Mathematics teachers' enactment of cognitively demanding tasks: Investigating links to teachers' knowledge and conceptions" published in the Journal for Research in Mathematics Education, Volume 45, No. 5 (2014).

- *Distinguished Scholar Award*

Dr. Judit N. Moschkovich from the University of California Santa Cruz received this award for her legacy of innovative scholarship in mathematics education research focused on the role of language and multilingualism in the teaching and learning of mathematics. She delivered the *Distinguished Scholar Lecture* titled: "*Integrating languages into research on mathematical learning.*" Her talk was recorded and it is now made into a podcast (thank you Sam Otten for helping us with this!) -

https://www.podomatic.com/podcasts/mathed/episodes/2019-06-05T10_40_51-07_00

V. Report from Senior Co-Chair

Status of the SIG Board Membership

Outgoing Members:

Sarah Theule Lubienski, Co-Chair, *Indiana University*
Niral Shah, Communication, *Michigan State University*
Katherine Lewis, Electronics, *University of Washington*
Nicole Louie, Events, *University of Wisconsin at Madison*
Kristy Litster, Graduate Student Representative, *Utah State University*

Continuing Board Members:

Sandra Crespo, Co-Chair (2018-2020), *Michigan State University*
Darrell Earnest, Awards (2018-2020), *University of Massachusetts Amherst*
Lorraine Males, Treasurer (2018-2021), *University of Nebraska-Lincoln*
Daria Gerasimova, Graduate Student Representative (2018-2020), *George Mason University*

New Board Members:

Jeffrey Chopin, Co-Chair (2019-2021), *University of Rochester*
Nicole M. Joseph, Communications (2019-2021), *Vanderbilt University*
Naomi Jessup, Electronics (2019-2021), *Georgia State University*
Luis Leyva, Events, (2019-2021), *Vanderbilt University*
Lori Burch, Graduate Student Representative (2019-2021), *Indiana University*

AERA 2018 SIG-RME Sessions:

Sessions allotted to SIG-RME by AERA: 1 meeting, 11 sessions, 27 roundtable/poster sessions. This year, 163 proposals were submitted to SIG-RME, including 13 symposium proposals and 150 individual proposals. We are very grateful to the 124 reviewers who collectively completed over 803 reviews! See the table below for a summary of submissions and accepted proposals. Acceptance rate: 49% (69% for symposia, 48% for others)

	Symposia	Paper	RT or posters
Submitted	13	150	n/a
Accepted	9	20 (4 paper sessions)	11 RT and 16 Posters



TREASURER'S REPORT

A. SIG/RME Membership Totals

Membership total as of (4/01/18; 4/01/19) – 482; 438

New members (joined in 2018; 2019) – 89; 65

Lapsed (individuals whose membership lapsed last year) – 362; 382

Past Four Years Membership Totals:

4/06/18: 482

4/08/17: 464

4/08/16: 501

4/12/15: 474

B. Budget

Beginning Balance (as of Jan 1, 2018)	\$28,766.81
Income	
2018 Membership Dues	\$6,115
Expenses	
2018 AERA Early Career Award	-1,000.00
2018 AERA Award Cost	-90

2018 AERA Award Lunch Table	-500
2018 AREA SIG-RME Reception	-7,494.56
2018 AERA Grad Student Rep Travel Stipend	-350
2018 AERA SIG Management Fee	-300
Ending Balance (as of Dec 31, 2018)	\$25,147.25
Total Income	6,115
Total Expenses	-6,555
Net Gain	-\$440

Projected Budget

- Income from Dues: \$6,000
- Expenses
 - Awards: \$590 - \$2,500
 - Business Meeting: \$4,000
 - Travel Stipends: \$350
 - Donations: \$1,500
 - Fees: \$300



SIGRME CONNECTOR: CREATING OPPORTUNITIES TO CONNECT

Looking to connect with other researchers for collaborative research or to create a conference symposium proposal? Join the SIG-RME Connector (SIG-RME Members Only) to post your research interests and connect with other researchers who share your interests.

<https://goo.gl/forms/mecDVn3SiNResbzk2>

What is the SIGRME Connector?

The SIGRME Connector is a Google Sheet that contains information about our members who are interested in connecting with their peers for a variety of purposes, including research collaborations, writing groups, etc. Although it is targeted for graduate students and early career researchers, any SIGRME member can join. The Google Sheet is available in a read-only mode for participating members.

How do I add myself to the SIGRME Connector?

To be added to the Google Sheet, please complete this survey: <https://goo.gl/forms/mecDVn3SiNResbzk2>. Please note that the information you provide will be available for other members who complete the survey (unless explicitly noted otherwise).

How do I remove myself from the SIGRME Connector?

To be removed from the Google Sheet, please use the same survey. The permanent link for the survey is available on the SIG-RME website: <http://sigrme.org/aera-links/>.

How do I access the SIGRME Connector?

Once you complete the survey, the SIGRME Connector Google Sheet will be shared with you via the email you provide. Please allow several days for processing.

How do I use the SIG-RME Connector?

You can search the database by research interests and purpose of networking to find graduate students or early career researchers with whom you would like to connect. Next, use the contact information provided to connect with your peers!

What if I have more questions, would like to provide feedback, or share a concern?

Please contact the SIG-RME Graduate Student Representatives at sigrmegraduaterrep@gmail.com.

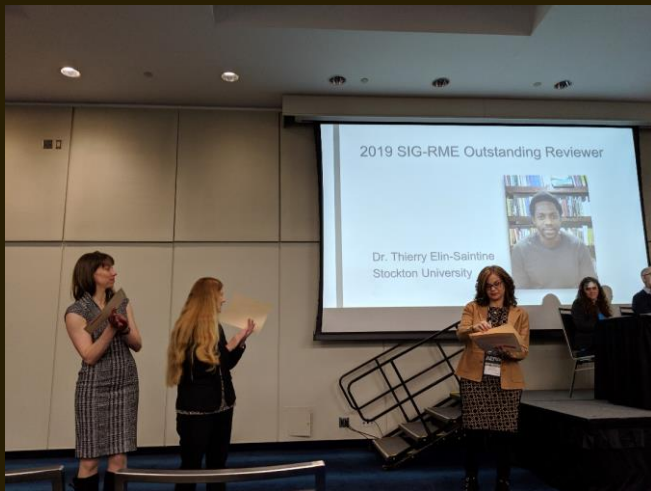




Dr. Judit N. Moschkovich
University of California,
Santa Cruz



AERA SIG 2019
RESEARCH IN MATHEMATICS EDUCATION SIG
EARLY CAREER PUBLICATION AWARD
Dr. Annie Garrison Wilhelm



2019 SIG-RME Outstanding Reviewer
Dr. Thierry Elin-Saintine
Stockton University



SPECIAL INTEREST GROUP

Research in Mathematics Education

